

Safari Group

*Delivering excellence
since 1984*



Table of Contents



Who we are

Safari through the years
Vision 2030 alignment
Chairman's message

Safari Group Profile

What we strive for
Measures for sustainability

A history of growth

Expanding workforce &
Geographic spread
Sustaining development
What sets us apart
Response to COVID-19

Strategic partnerships

Safari and QSS

Success across many sectors

Telecom
Food and beverage
Travel
Oil & Gas
IT solutions
Publishing
Health & beauty
Serviced apartments

Projects Overview

Construction Portfolio
Facilities Management Portfolio

Safari Group Structure

Company structure

Clients and Certifications

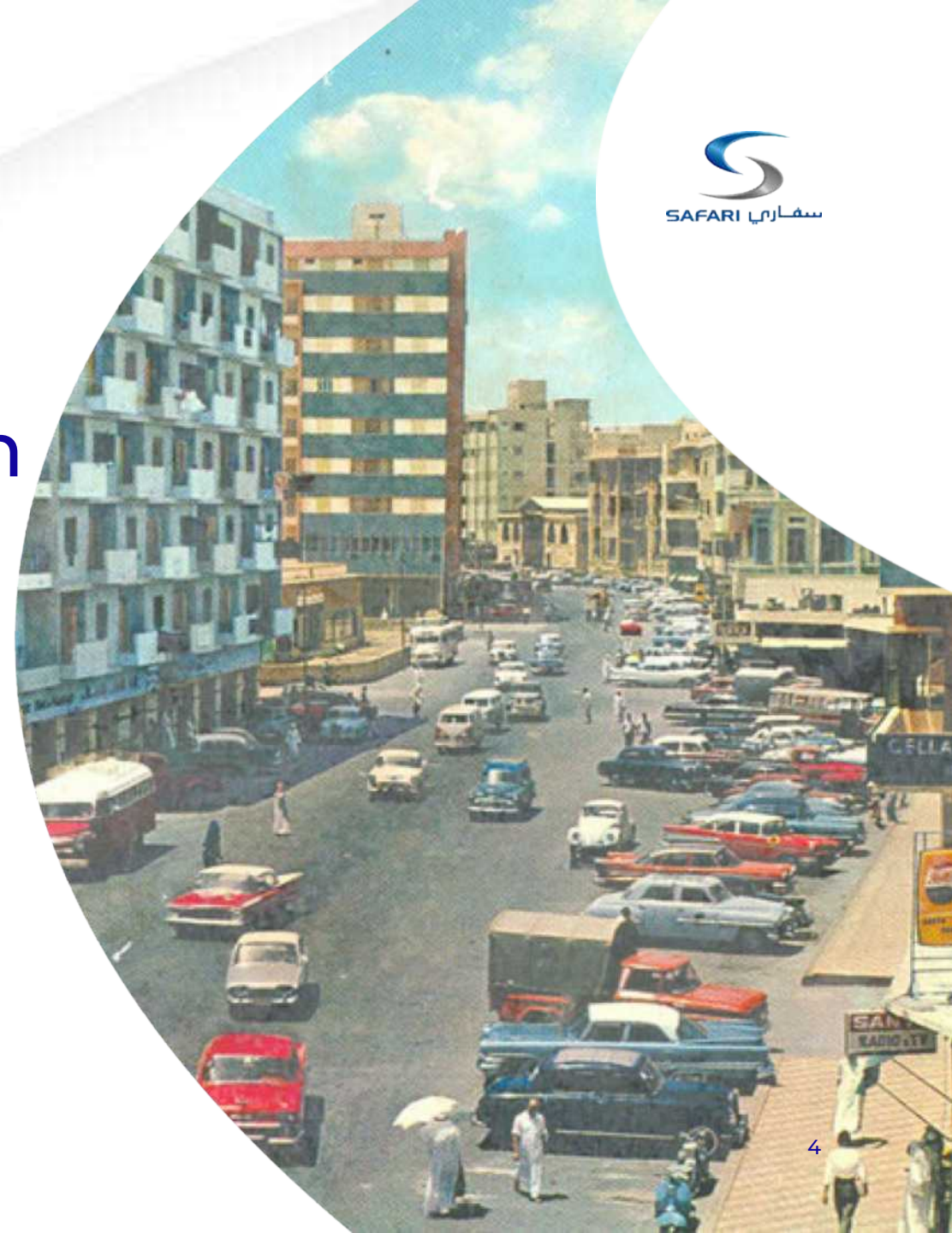
Government clients
Private sector clients
ISO Certifications



Who we are



In 1984, Saleh Al Sagri set up a travel agency in Riyadh which he named “Safari”. It was the first step on a journey towards expansion and prosperity.



From these humble beginnings, both country and company have grown exponentially in their impact and success.

Saudi Arabia's population and GDP per capita have almost tripled since 1984, rising to 34.2 million and \$23,000 respectively.



Safari Group now owns over 10 businesses, with construction and facilities management (FM) as the two key pillars and employs over 10,000 staff.

Today, both
Safari Group and
Saudi Arabia are
transforming
rapidly under the
Vision 2030.



Safari Group is deeply involved in the economic transformation of our Kingdom.

Our goals are aligned with Vision 2030, to promote local talent, expand the private sector and elevate local companies to an international level.

Together we will make a future to make the next generations proud.



Vision 2030 alignment

Safari Group key development goals are completely in line with Vision 2030



Elevate Saudi companies to become internationally competitive



Operate a green and sustainable business model



Increase knowledge and high technology transfer



Support Saudization and localization



Participate in Saudi Arabia's giga projects and development projects



Meanwhile, Safari Group is leveraging the latest technologies and setting new standards in client and customer satisfaction.

Grounded in experience

A proven track record of delivering excellence has helped Safari forge and grow solid relationships with our partners. We are now contributing to the transformation of Saudi Arabia by supporting local talent and projects.



Chairman's message

"At Safari we have created an environment filled with talent, dedication, and passion. These values, combined with our corporate culture of excellence, will help us navigate these challenging yet exciting times, under the Vision 2030 reform program, maintaining and growing Safari's reputation as one of Saudi Arabia's leading companies.

We have long relationships with many key Saudi government entities and a track record for delivery on projects of the highest quality. Looking forward, we seek to build on this, continue to delight our clients, and also expand into new sectors.

As the world around us changes, we must adapt. We now consider environmental sustainability, energy conservation, and efficiency as priorities when we think of client solutions.

Saleh Al Sagri, Chairman of the Board



Operating across sectors

Since its beginnings, Safari Group has expanded into many business sectors in Saudi Arabia and beyond. We are always on the look out for opportunities to grow in the public and private sectors.

Facilities
Management (FM)



Construction



Telecom



Hospitality



Travel



Oil & Gas



IT



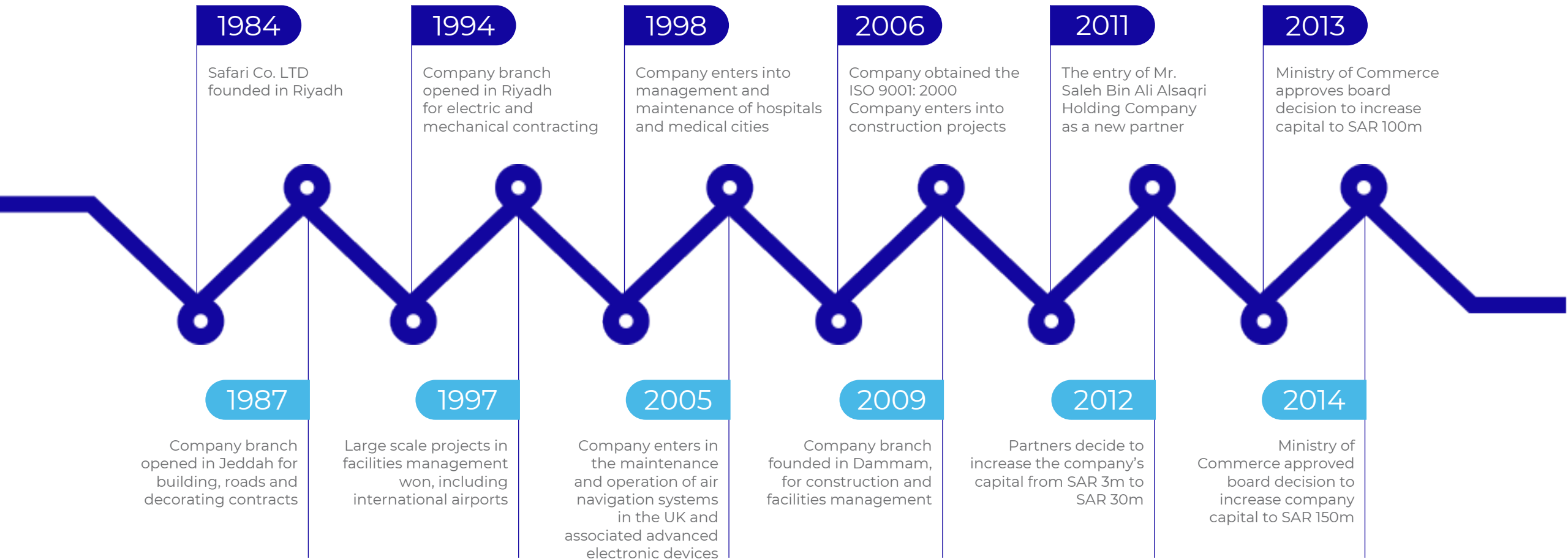
Education



Health & beauty



Safari through the years



Safari Group Profile



A history of growth

Our staff are our main asset

Our guiding principle is that our staff are our main asset. This has helped us grow from a one-office travel company to a multi-service conglomerate employing tens of thousands of staff worldwide.

Safari has a significant, highly trained pool of staff available within KSA.

We pride ourselves on having a large, agile workforce and a smooth system for selection and benefits that caters to the requirements of the staff as well as our clients.

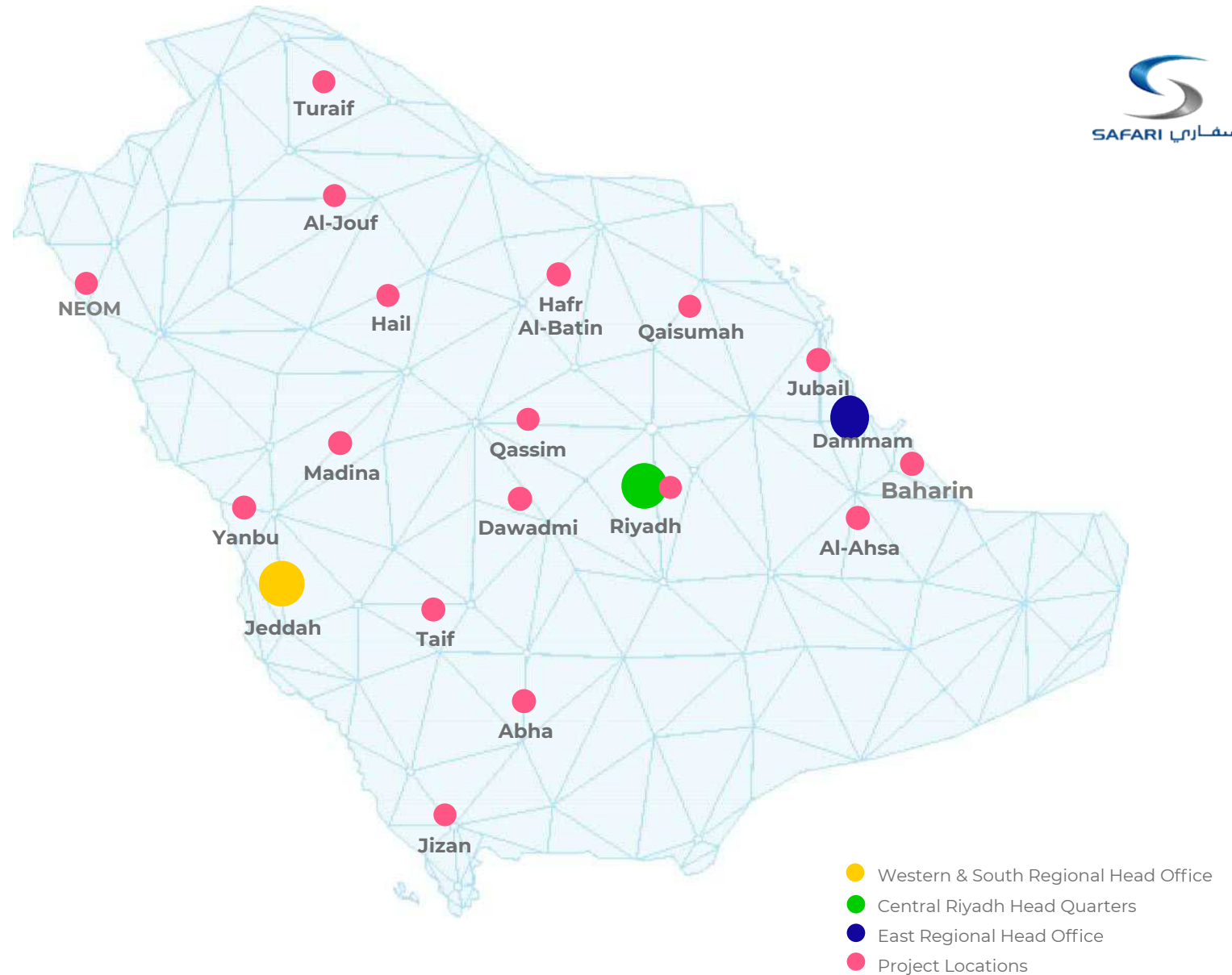
10,000+ / employees

1,800+ / Saudi employees

26 / different nationalities

Sustaining development in all corners of the country

Safari Group has offices in Saudi Arabia's key regions. From our offices in Saudi Arabia's three major cities, we oversee projects which are helping to develop all corners of the Kingdom.



What sets us apart

In all of our businesses we strive for greatness and to delight our clients. We are distinguished from the competition by our:

1

High level of service delivery



2

Performance excellence



3

Customer-centric delivery
& high Levels of satisfaction



4

Use of innovative technologies



5

Proven 5-star service



6

People-driven processes



7

High level of efficiency



8

Extensive experience
& long track record



Response to COVID-19



Safari Group responded effectively to the challenges raised by COVID-19. Thanks to this, we were able to continue providing safe, efficient and effective service to our clients and protect our staff, throughout the pandemic.

Formed Safari COVID-19 policy

Rented two hotels in Jeddah for staff isolation

Conducted COVID-19 safety training

Rented two buildings as temporary accommodation units

Allocated mobile hotline number for COVID-19 reporting or inquiries

Implemented infection control program for Safari staff transport vehicles

Produced video awareness program "Safari Cares | COVID-19"

Implemented remote working to reduce attendance in the HQ and maintain social distance.

Formed communication channels to disseminate COVID-19 related information

Staggered work hours for various departments in Safari HQ

Implemented temperature checks across offices, projects and staff camps

Installed transparent workstation cabin separation screens in the offices

Decontamination teams set up to service outbreaks with clients/projects

Provided catering services to all staff during lockdowns, isolation

Implemented infection control program across the Safari offices, projects/sites and staff accommodation

Daily trackers from each region to HQ Gold team

Allocated isolation rooms in the staff accommodation units

Strategic partnerships

Robotics and Artificial Intelligence.

Key areas of expertise:

- Robotics
- Artificial Intelligence
- Advanced Automation
- AV/VR/XR

With combined local and global presence and experience, Safari-QSS has access a large pool of resources with experience and know-how, empowering us to execute small-to-mega sized projects in the Kingdom.



Success across many sectors

Telecom

Safari Telecom has been active in the kingdom since 1996 and is now a key player in the telecom sector, one of the Kingdom's most crucial sectors looking to the future.



Safari Telecom has a key partnership with Mobily, one of Saudi Arabia's premier telecom service providers

The authorized agent, selling Mobily products in the marketplace

Manages and runs over 100 Mobily trade outlets in the country's main retailers, including Extra, Jarir, Othaim Market, BinDawood, Carrefour, LuluMarket

Exclusive contract for marketing and installing Mobily fiber optic cable services

Operates 100 branches of the Mobily franchise all over the Kingdom

Food and beverage

In 2009, Safari founded the Unique Hospitality Company as a subsidiary which would oversee its operations in the hospitality sector. Over the years it has built up a number of local and international brands in the Saudi market and continues to expand across the Kingdom.



Unique Hospitality Co. delivers an outstanding experience in Saudi Arabia's restaurant sector by providing customers with:

- Excellent service
- Delicious food
- Kid's entertainment



Unique Hospitality Co. acquired the rights to Chuck E Cheese's the widely famous US family restaurant. Currently operates 18 Chuck E. Cheese's in KSA.



Manoosha was founded in 2001 in Riyadh to offer a traditional Middle Eastern dish with simple and natural ingredients. Manoosha is now established as a market leader in the Manaeesh business. We have grown to 20 Manoosha restaurants.

Travel

Safari Travel was where the whole story started. Founded in the early 1980s, Safari Travel & Tourism has gained reputation among partners and clients for delivering the highest possible travel services.

Safari Travel worldwide services

Electronic ticketing and automated reservation

Hotels, car rentals, apartment reservation

Holiday insurance

Computer reservation systems

MICE tourism

Visa assistance

VIP and special handling

Tours of Saudi Arabia and worldwide

Private jets and aircraft charters

Safari Travel is certified by several international organizations



Oil & Gas

Safari Oil and Gas provides specialized pipeline services for a variety of industries such as oil and gas, power, water, and petrochemical sectors. It has teamed up with highly experienced international players to deliver high quality services.

Our Services

Pipeline repairs using non-metallic composite solutions for high pressure and high temperature lines

Pipeline reinforcement of thinning wall, cracks and dents

Online leak sealing technology for pipeline & other metallic structures via clamps and composite reinforcement

HDD/road crossing pipelines protection

Pipeline integrity & inspection services (on- and off-shore)

Maintenance and refurbishment of off-shore berths

Flanges leak & fire prevention using disruptive technology

Effective corrosion control

Our Products

Contour activated
Full metal gasket
Diamondwrap

Contour
Snap wrap
Clock spring

Pipe support
Leak stopper

Our Partners

CLOCK SPRING | NRI

PIPRO

newtesol
nuevas tecnologías de soldadura

SAFARI
سفاري

SAFARI
OIL & GAS

IT solutions

BI Technologies provides innovative, competitive and premium software services in the MENA region. The combination of strong management focus, wide capabilities, flexibility has given our clients satisfaction and allowed us to built long successful relationships.



Our Services

Systems Implementation

Project Management

Software Development

Systems Integration

Helpdesk & Support

Our Solutions

IBM Maximo Asset Management

Power BI

Microsoft Dynamics 365

Field Buzz

Sales Buzz

Fleet Control

Mena I Tech

Roadnet Technologies

Microsoft Dynamics CRM

Cloud Solutions

Publishing

Dar AlJadawel is a fully registered Saudi company started in 2003 with an aim to provide the latest and most suitable educational products geared toward the supply demands of the growing educational market in Saudi Arabia.

Dar AlJadawel is recognized by established international publishing houses



We also work closely with universities, schools, hospitals and libraries in the Kingdom



Health & beauty

Elyzee Medical Center was established in Riyadh, with a branch in Abu Dhabi. It combines highly trained specialists and the latest medical technologies to provide the best quality medical and beauty care.

The center is proud to have elite consultants with internationally recognized scientific certificates and commitment to professional standards.

Elyzee specializes in:

Plastic surgery

Dermatology & beauty

Laser

Dentistry

There is also a maternity clinic and on-site pharmacy

Serviced apartments

Safari Hotel Apartments was founded in response to the growing demand for quality furnished and serviced apartments. We offer guests a convenient and relaxing experience at a competitive rate.

Our Services

24 hour room service

Housekeeping

Fully equipped kitchen

Satellite TV

High-speed internet

Safari Hotel Suites has 40 apartments in Saudi Arabia

Projects overview

Construction projects



King Abdullah Jazan New Airport

Client

The General Authority of Civil Aviation

Area of the site

12km by 5.5km

Project status

Under Execution

Completion status

20.45%

Scope of work

- Design and build all Port Facilities
- Main Terminal and Royal terminal Buildings
- Air Traffic Control Tower
- Aircraft Fire and Rescue Station
- Airport Director Office
- Other Ancillary Buildings
- Runway, Taxiways and Aprons
- Airside Infrastructures and Facilities
- Landside Infrastructures
- Facilities and Utilities
- Diversion of Wadi Sabya Stream



Project

Jazan Existing Airport

Client

The General Authority of Civil Aviation

Project status

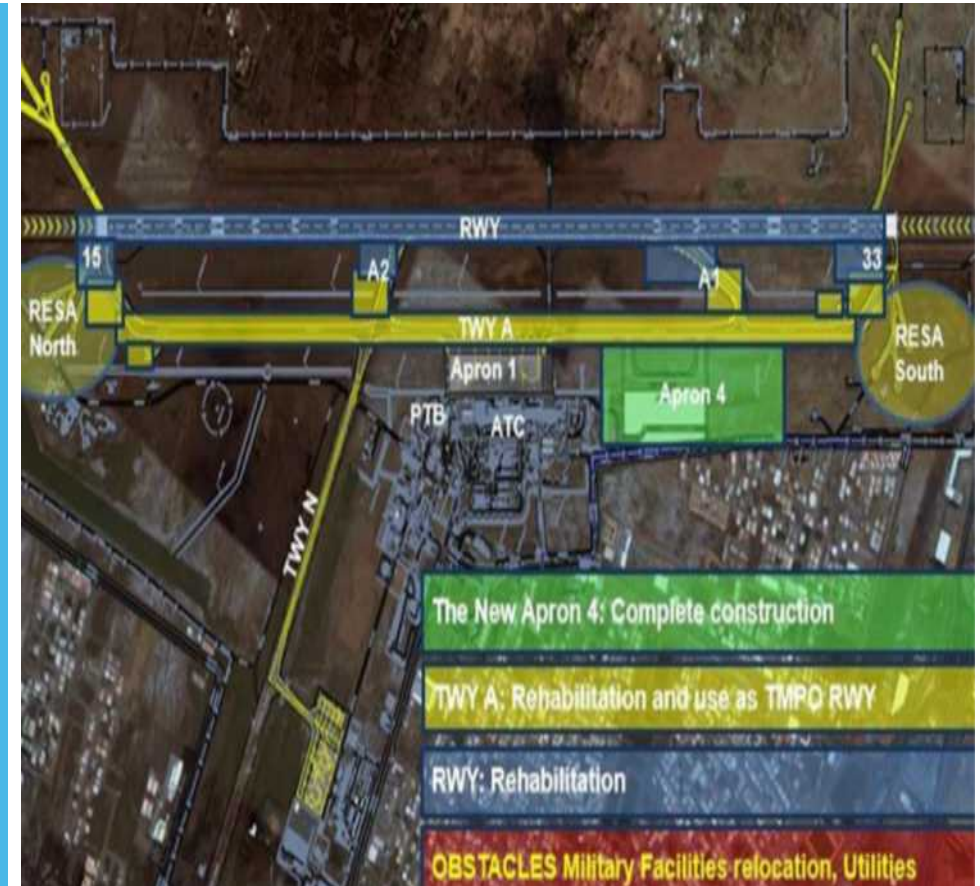
Under Execution

Completion status

57%

Scope of Work

- Rehabilitation of King Abdullah Bin Abdulaziz Airport, Jazan
- Rehabilitation for Taxiway landside and airside infrastructures



Logistics Administration Building (LAB) - Neom

Client

NEOM Company

Area of the site

26,000 m²

Project Status

Accomplished

Completion Status

100%

Service provided

- Main Building :
- Engineering including BIM modeling.
- Prefabricated volumetric modular package / Area 1249 m2.
- External Works :
- Engineering
- External MEP Package
- Charging containers for electric vehicles
- Active & passive IT equipment and systems
- Roads & asphalt
- Landscape package
- Furniture & appliances package
- Equipment package (generators, synchronization panels, auto transfer)



Hail University, Computer Science College Project

Client

Ministry of Education

Project status

Accomplished

Completion status

100%

Phase one

- Medical college building Including halls
Medical labs
- Auditorium
- General site works
- All structural, Finishing, MEP systems and
infrastructure

Phase Two

- Computer Science college
building Including halls
- Tech labs
- Auditorium
- General site works
- All structural, Finishing, MEP systems and
infrastructure



Project

Qassim University Medical College Project

Client

Ministry of Education

Area of the site

22,505 m²

Project status

Under Execution

Completion status

89%

Scope of Work

- Medical college building including halls, labs, auditorium, and general site works
- Total area of buildings: 29,240 m²
- Number of stories: 3 stories + Roof



Hail University Administration Tower and support buildings

Client

Ministry of Education

Area of the site

804,730 m²

Project status

Under Execution

Completion status

53 %

Scope of Work

- Admin tower 18 floors building, 6 support buildings, ancillary yard and general siteworks
- Total area of buildings: 45,054 m²
- Number of stories: 18 stories + Roof



North Border University Housing Project (Phase I)

Client

Ministry of Education

Area of the site

580,512 m²

Project status

Under Execution

Completion status

82%

Scope of Work

- Housing units for university staff, including buildings, Villas, infrastructure and site works.
- Total area of buildings: 378,458 m²
- Project consists of:
- Number of Villas and Buildings:
- No. of (32) apartments (Sample A1)
- No. of (421) Villas (Sample V1)
- No. of (75) Villas (Sample V2)
- Number of Stories:
- 5 stories + Upper roof for every apartment(building)
- 2 stories + Upper roof for every villa (sample V1&V2)



North Border University Housing Project (Phase 2)

Client

Ministry of Education

Area of the site

580,512 m²

Project status

Under Execution

Completion status

45%

Scope of Work

Housing units for university staff, including buildings, Villas,

Total area of buildings: 378,458 m²

Project consists of:

- Number of Villas and Buildings:
- No. of (7) apartments (Sample A1)
- No. of (7) Villas (Sample V1)

Number of Stories:

- 5 stories + Upper roof for every apartment (building)
- 2 stories + Upper roof for every villa (sample V1)



North Border University Hospital Project

Client

Ministry of Education

Area of the site

318,616 m²

Project status

Under Execution

Completion status

44%

Scope of Work

All structural, finishing and MEP works 430 beds Hospital.

Total area of buildings: 117,702 m²

Number of stories: 3 stories + Roof + Upper roof

Project consists of:

- Main Hospital
- Total Basement floor with area = 14,552 m²
- Total Ground floor with area = 55,457 m²
- Total First floor with area = 38,177 m²
- Total Second (roof) floor with area = 8,919 m²
- Total upper roof with area = 597 m²
- Total general site with area = 318,616 m²



King Abdul Aziz University, Rabigh Hospital Project

Client

Ministry of Education

Area of the site

312,264 m²

Project status

Under Execution

Completion status

37%

Scope of Work

All structural, wet finishes and MEP first and second fixes, 400 beds Hospital.

Total area of buildings: 125,772 m²

Project consists of:

Main Hospital:

- Number of stories = 4 stories + roof
- Total area of the buildings = 125,772 m²
- Total Basement floor with area = 16,455 m²
- Total Ground floor with area = 56,672 m²
- Total First floor with area = 37,844 m²
- Total Second floor with area = 14,164 m²
- Total roof with area = 810 m²



Government Security Presidency of Archive Centre in Riyadh

Client

Ministry of Interior

Area of the site

10,050.69 m²

Service

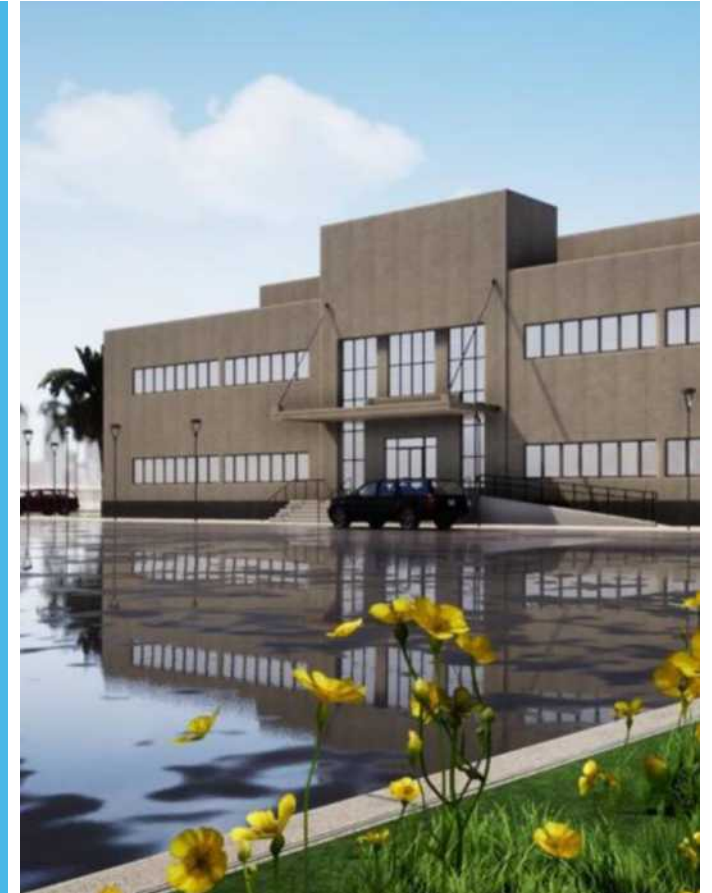
Construction of Government Security Presidency of Archive Centre in Riyadh

Service provided

Main Building-Two floors Building with fully furniture

Main Building (B01)

- Archive Centre / Area: 4478 m²
- Security Building (B02A) / Area: 17.64 m²
- Security Building (B02B) / Area: 17.64 m²
- Electricity station (B04) / Area: 171.2 m²
- Warehouse (B05) / Area: 121.2 m²
- Water tank (B06) / Area: 253.5 m²
- Rejected water tank (B07) / Area: 17 m²
- waste water holding tank (B08) / Area: 42.6 m²



Facilities Management projects



Aramco

Service

Integrated Facilities Management

Year to Date

Abqaiq Housing

01-06-2016 / 31-05-2024

Abqaiq Recreation Services

01-02-2018 / 31-01-2026

Qurayyah and Ugair Beach

01-02-2018 / 31-01-2026

Manpower

537 employees

Service provided

- Guest House Management
- Hotel Services
- Health & Safety
- Mail Room and Postal Services
- Shoes Repair
- Laundry & Dry Cleaning Services
- Community Liaison Office Management
- Housekeeping & Janitorial
- Housing Audit Inspection
- Key Management

أرامكو السعودية
saudi aramco



Project

PNU Academic & Health Services at Nora Lot 1

Service

Integrated Facilities Management

Manpower

659 employees

Service provided

- Support service management
- Operations and maintenance of Hard Services
- Operations and maintenance of Soft Services
- Window cleaning
- Internal housekeeping services
- External janitorial services
- Pest control
- Indoor plants



King Fahad Causeway (Bahrain Causeway)

Service

Hard & Soft Services
Bahrain & Saudi Sides

Bridge Maintenance
Across the total Causeway

Manpower

540 employees

Service provided

- Main Building :
- Engineering including BIM modeling.
- Prefabricated volumetric modular package / Area 1249 m2.
- External Works :
- Engineering
- External MEP Package
- Charging containers for electric vehicles
- Active & passive IT equipment and systems
- Roads & asphalt
- Landscape package
- Furniture & appliances package
- Equipment package (generators, synchronization panels, auto transfer



Project

King Abdullah bin Abdulaziz University Hospital (KAAUH)

Service

Comprehensive maintenance
and operation

Manpower

229 employees

Service provided

- Custodial Services
Housekeeping - Janitorial
service
- Window & Exterior Facade
building Cleaning
- Roads and Car Park Cleaning
- Waste Management and
Waste Recycling



Project

King Abdullah Medical City - Riyadh

Service

Integrated Facilities Management

Manpower

715 employees

Service provided

- Hygiene cleaning (WC)
- Daily housekeeping
- Provision of cleaning supplies
- Specialist cleaning
- Building façade cleaning
- General waste
- Building façade cleaning
- General waste disposal



Ministry of National Guard
Health Affairs (MNGHA)
Right Care .. Right Now | Since 1982

Project

King Abdullah Medical City - Jeddah

Service

Integrated Facilities Management

Manpower

531 employees

Service provided

- Hygiene cleaning (WC)
- Daily housekeeping
- Provision of cleaning supplies
- Specialist cleaning
- General waste
- Building façade cleaning
- General waste disposal



Project

King Abdullah Specialist Children's Hospital (NGHA) & KAMC Central Lab

Service

Insurance, preparation & operation, and cleaning services

Manpower - NGH

KASCH - 400

KAMC - 32

Service provided

HVAC SYSTEM

PLUMBING

PUMPS

FIRE FIGHTING

FIRE ALARM

MEDICAL GASS

MEDIUM VOLTAGE

LOW VOLTAGE

BMS SYSTEM

GATE BARRIER

PAINTING

CARPENTER WORKS



Project

Imam Abdulrahman Al Faisal Hospital (IABFH) Dammam

Service

Insurance, preparation & operation, and cleaning services

Manpower

75 employees

Service provided

- Hygiene cleaning (WC)
- Daily housekeeping
- Provision of cleaning supplies
- Specialist cleaning
- Building façade cleaning
- General waste
- Building façade cleaning
- General waste disposal



Project

Prince Mohammed Bin Abdul Aziz Hospital (PMBAH) Al Madinah

Service

Insurance, preparation & operation, and cleaning services

Manpower

136 employees

Service provided

- Hygiene cleaning (WC)
- Daily housekeeping
- Provision of cleaning supplies
- Specialist cleaning
- Building façade cleaning
- General waste
- Building façade cleaning
- General waste disposal



Ministry of National Guard
Health Affairs (MNGHA)
Right Care .. Right Now | Since 1982

Project

11 Primary Clinics - NGH

Service

Cleaning services

Manpower

141 employees

Service provided

- Hygiene cleaning (WC)
- Daily housekeeping
- Provision of cleaning supplies
- Specialist cleaning
- Building façade cleaning
- General waste
- Building façade cleaning
- General waste disposal



Ministry of National Guard
Health Affairs (MNGHA)
Right Care .. Right Now | Since 1982

22 Protocol Palaces

Service

TFM Services to multiple Palaces across the Kingdom

Manpower

2,629 employees

Service provided

- Total of 22 Palaces geographically spread all over Saudi Arabia in Riyadh, Al Hissa, Qassim, Jeddah, Makkah, Madinah, Taif, Abha et al
- All properties are an extremely high level of service delivery
- Providing services to high-end client with frequent VVIP visits
- Dealing with the highest of security and access controls



Two Private Affairs

Service

TFM Services

Manpower

981 employees

Service provided

- Total of two Palaces but involving 4 contracts, one in Jeddah and one in Riyadh
- The largest of contracts with some 500 staff assigned
- Government clients and VVIPs present during summer/winter occupancy periods
- Technically challenging given the size, quantity and complexity of systems installed within



Project

Ministry of Interior - Riyadh

Service

Integrated Facilities Management

Manpower

571 employees

Service provided

- Housekeeping
- Janitorial
- Health & Safety
- External Hard Landscape
- Window & Facade cleaning
- Security Systems
- Power & Safety
- Logistic Support
- Waste Management
- Gardening
- Pest Control
- Utility



Ministry of Interior
Kingdom of Saudi Arabia

Project

Ministry of Interior - Dahaban

Service

Integrated Facilities Management

Manpower

193 employees

Service provided

- Housekeeping
- Janitorial
- Health & Safety
- External Hard Landscape
- Window & Facade cleaning
- Security Systems
- Power & Safety
- Logistic Support
- Waste Management
- Gardening
- Pest Control
- Utility



Ministry of Interior
Kingdom of Saudi Arabia

Project

Riyadh Airports

Service

Fire and Domestic Water Services
KKIA-Package #5 & #6 (M209 & M206)

Manpower

207 employees

Service provided

- Fire suppression systems
- Fire water networks
- Water systems
- Plumbing systems
- Fountains systems
- Water management



King Abdulaziz International Airport Jeddah

Service

Provision of manpower, spare parts, and consumable materials, designated computer peripherals, equipment and maintenance and construction aids, to provide Management, Operation and Maintenance Services at King Abdul Aziz International Airport and associated areas at Jeddah on a 24 hour, seven days a week basis

Manpower

1800 employees

Service provided

- TFM
- Chillers Maintenance
- Cooling Water Network
- Sea Water Network
- Electronic System
- Security System Operation/ Maintenance
- Terminal 1 & Royal Terminal Pipeline



Domestic Airports

Service

Operations, Maintenance and Cleaning of facilities & utilities of five (5) domestic airports in the Northern Region

Manpower

738 employees

Qassim - Wadi Al Dawsir –
Dawadmi – Al Hassa - Qaisumah

Service provided

- TFM
- Security Systems
- Power & Safety
- Logistic Support
- Waste Management
- Gardening
- Pest Control



Dhabab Towers

Service

Complete Operation and Maintenance of the Electrical, mechanical, Electronics Equipment's, Civil works, Housekeeping outside towers, Pest control, Landscape

Manpower

69 employees

Service provided

- HVAC
- Electrical LV& HV
- Plumbing
- Shutter doors
- Gate barriers
- Elevators
- Generators
- BMS
- Wall paint
- Carpentry
- CCTV system
- Fire protection systems
- Water treatment plant
- Housekeeping outside towers
- Pest control
- High, low level glass cleaning
- Landscaping



Kingdom Tower Center

Service

Janitorial services, General Operation and Maintenance of the Electrical, Electronics, and Mechanical systems of the Kingdom center excluding tenanted areas and tenant's fixtures, the West Podium and 10 floors of the Hotel complex.

Manpower

215 employees

Service provided

- Loading Docks
- Fountains
- LPG Systems
- Shopping Mall Food Hall
- Waste Management
- Central HVAC - Civil
- Electrical – LV
- Tower - East & West Podium
- Operations & Maintenance Management
- Housekeeping in Tower & Shopping Mall
- Window Cleaning
- Fire Systems - CMMC Management



Project

Kingdom School

Service

Integrated Facilities Management

Manpower

51 employees

Service provided

- Inside/External Housekeeping & Janitorial
- Sports Halls & Swimming Pool
- Roads & Grounds Services
- Window Façade Cleaning
- Waste Management
- Fire Systems
- HVAC
- Electrical
- Civil



Project

Diriyah Gate Development Authority

Service

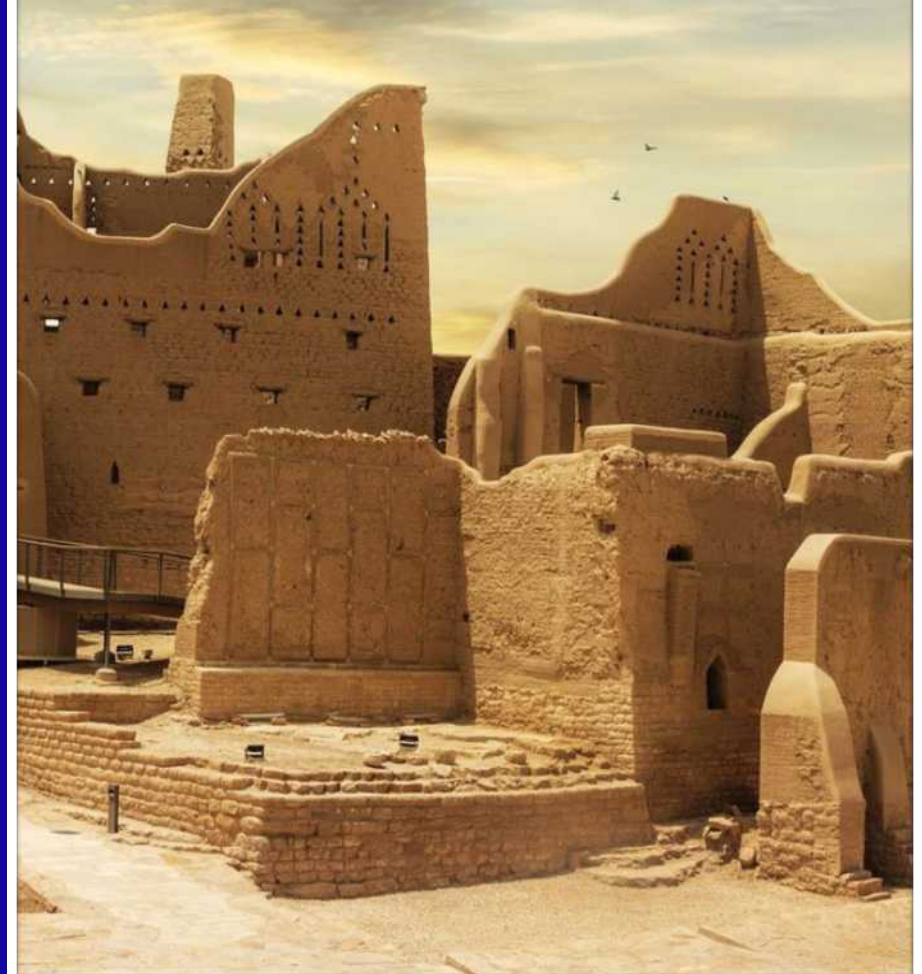
FM services.

Manpower

121 employees

Service provided

- HVAC
- Electrical LV& HV
- Plumbing
- Shutter doors
- Gate barriers
- Elevators
- Generators
- BMS
- Wall paint
- Carpentry
- CCTV system
- Fire protection systems
- RO treatment plant
- Housekeeping
- Pest control
- High, low level glass cleaning
- Landscaping



Project

Diplomatic Quarter Riyadh

Service

Operation & Maintenance,
Housekeeping

Manpower

494 employees

Service provided

- Complete Operation and Maintenance of the Electrical, mechanical, Electronics Equipment's, Civil works,
- Housekeeping outside towers, Pest control, Landscape



Project

SPIMACO Riyadh

Service

Integrated Facilities Management

Manpower

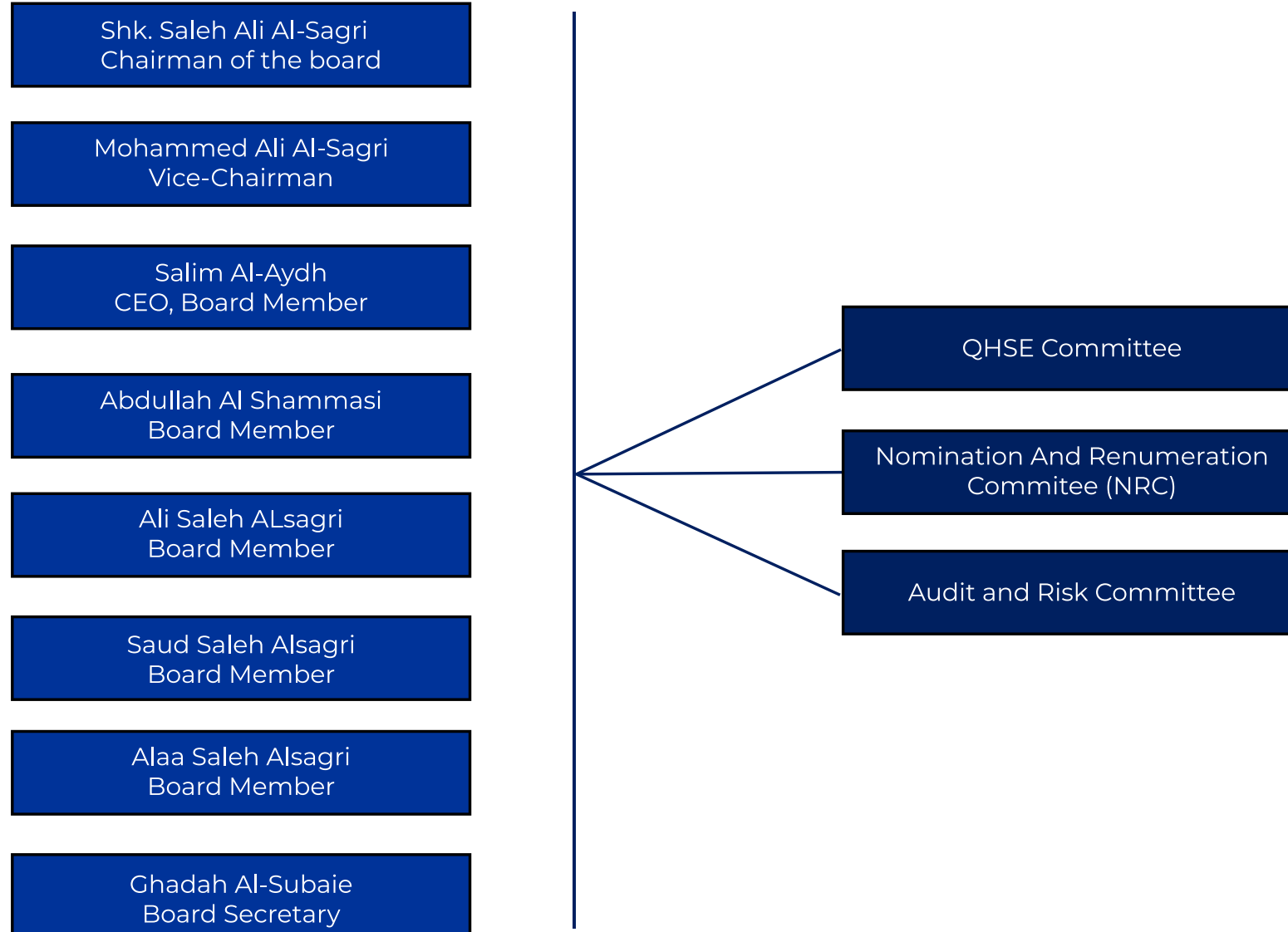
33 employees

Service provided

- Electrical - HV, MV, LV
- Mechanical & HVAC
- Hot & Cold Water & Sanitary Systems
- Water treatment Works & Water Sample Tests
- Electronics & Low current (CCTV, AV, SATV, Access Control, security systems, road barriers, entrance speed gates, sliding doors, powered window curtains,...)
- IP telephony, IPTV, Passive IT Elements, Maintain fiber optic cables
- Sports & fitness equipment
- Civil
- CAFM Services (Software provided by Client)
- Energy Management

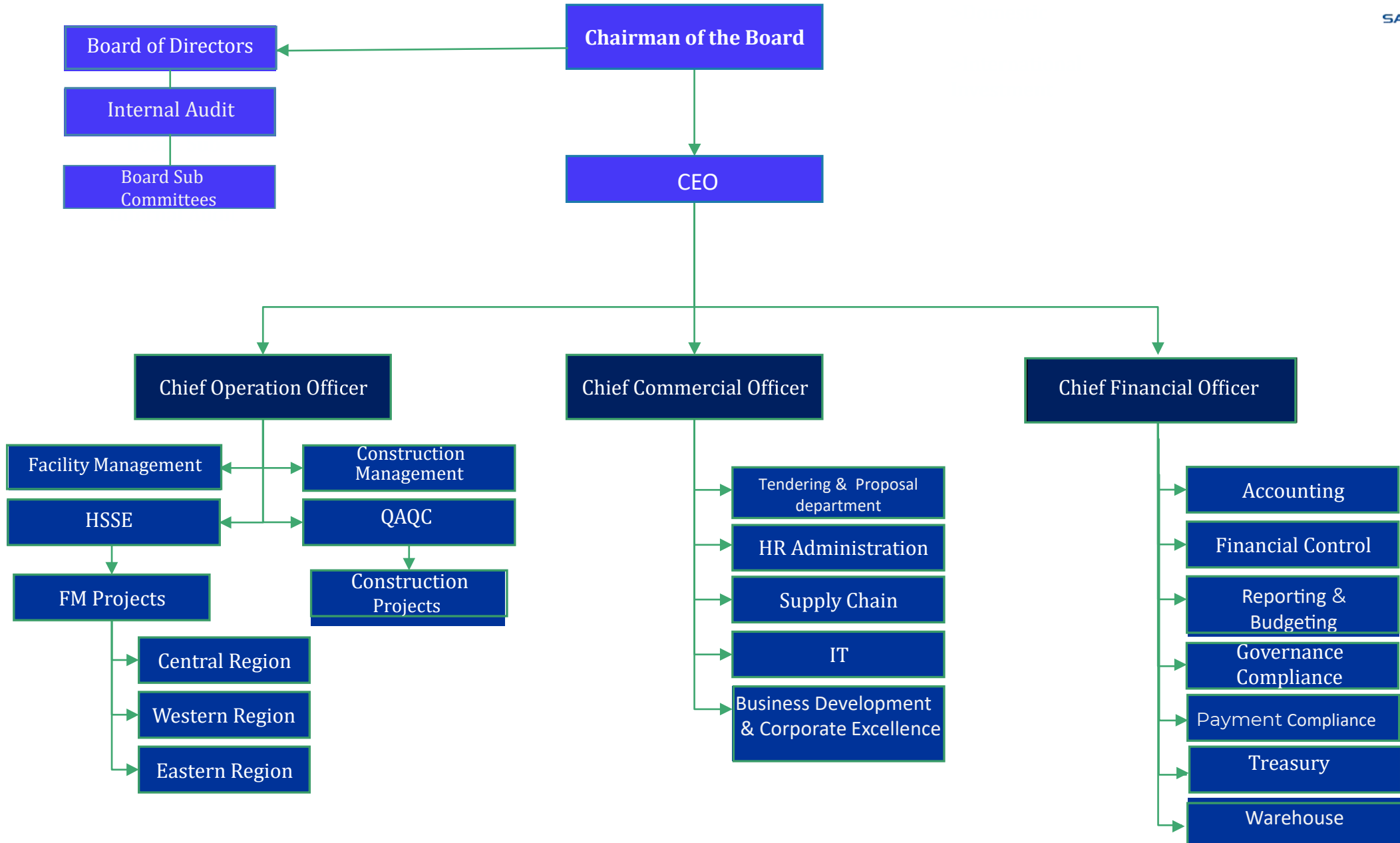


Safari Board Structure



SAFARI CLOSED JOINT STOCK COMPANY

MANAGEMENT ORGANIZATION CHART



Clients & Certificates

Government clients



Private sector clients



semi governmental



ISO Certifications

Safari group has 7 major ISO Certifications

ISO 22301: 2012 — FM, PM and Construction

ISO 45001: 2018 — Occupational Health & Safety Management

ISO 14001: 2015 — Environment Management System

ISO 9001: 2015 — Quality Management

ISO 27001: 2013 — Information Security Management

ISO 41001: 2018 — Facility Management

ISO 55001: 2014 — Asset Management System



Unique Hospitality Company



Food and Beverage

In 2009, Safari founded the Unique Hospitality Company as a subsidiary which would oversee its operations in the hospitality sector. Over the years it has built up a number of local and international brands in the Saudi market and continues to expand across the Kingdom.



Unique Hospitality Co.
Delivers an outstanding
experience
in Saudi Arabia's restaurant
sector by
providing customers with:

- Excellent Service.
- Delicious Food
- Kid's Entertainment



Unique Hospitality Co.
acquired the rights to
chuck E cheese's the
widely famous US family
restaurant:

- Currently Operates 15
Chuck E Cheese's in KSA



- Manoosha was founded in
2001 Riyadh to offer a tradi-
tional middle eastern dish
with simple and natural
ingredients.
- Manoosha is now established
as market leader in the
Manaees business.
- We have grown to 22 Manoo-
sha restaurants.



"Koffeehaus" obtained the
commercial brand Franchise
"Second Cup";

"Koffeehaus" has opened its
first branch of "Second Cup"
chain in July 2015 in the City
of London

The second branch was
opened in Bloomsbury,
London.

CHUCK E. CHEESE • Unique Hospitality

In 2009, Safari founded the Unique Hospitality Company as a subsidiary which would oversee its operations in the hospitality sector. Over the years it has built up a number of local and international brands in the Saudi market and continues to expand across the Kingdom.



UHC Overview:

During 2011, Unique Hospitality Company (UHC) and CEC Entertainment, Inc. signed a development agreement pursuant to which UHC will develop more outlets of Chuck E. Cheese (CEC) brand across various cities within the Kingdom

As of end of 2022, UHC operates 18 successful outlets across The Kingdom. UHC has also signed the exclusive right to operate Egypt and Morocco.

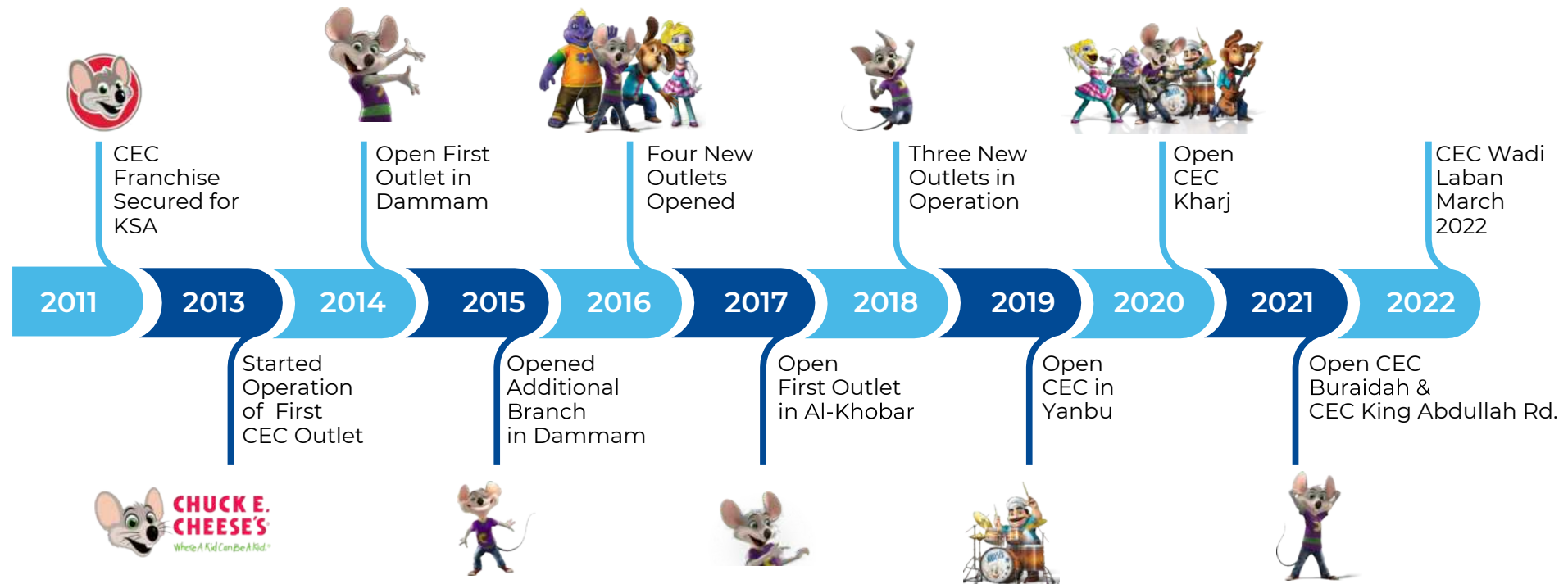
The first location in Cairo will open By Q3 of 2022, and an additional 2 in 2023. The target is to have 45 units by end of 2029 in the 3 key markets: Saudi Arabia, Egypt and Morocco

CEC Saudi Arabia was awarded the highest selling market by CEC International in 2018 and Best Franchise of year in 2019. While many entertainment businesses during Covid 19 hold to their development plan, we opened 3 locations during 2020 -2021.



CHUCK E. CHEESE • Unique Hospitality • KSA

Key Milestones:



Large Variety of Games Age 2 -14

- Unique Hospitality is one of leading kids entertainment group in the industry with wealth of expertise and knowledge in operating international entertainment brands.
- We are one of few Entertainment brands that offer full family entertainment experience: fun, games, food, and parties events.
- CEC offers unique arcade games, focused on the targeted age group, ensuring people can come with a sole purpose of being entertained
- Chuck E Cheese and his friends are the super core of who we are and they deliver that edge of competitiveness.
- Our safety measures are recognized as one of the best in the industry.
- The Brand is supported by a strong franchisor that operates over 600 shops inside and outside the USA.
- Unique Hospitality is the largest CEC Partner out of the USA



Number 1 Choice for Birthday Parties

www.safari.com.sa



Branch Unique Exteriors

To have the best time at
Chuck E. Cheese, we
assure the best looks.

www.safari.com.sa





Dancing, Fun and Games.

Dancing Floor-Fun House
Chuck E. Cheese Character
Parade

www.safari.com.sa



Futuristic Gaming Options

VR Games - New
Investment KSA Exclusive.

www.safari.com.sa

VR Games Theater

Full Family Experience.

www.safari.com.sa

Manoosha History in depth.

Founded in Riyadh in April 2001, the "Manoosha" concept stemmed from natural and simple ingredients. "Manoosha" sought to offer traditional Middle Eastern favorites through a trendy, fast casual establishment.

The founders of "Manoosha" developed great passion for food and a notion of establishing a leading Middle Eastern food chain. They created a concept that revolved around dough and stone hearth cooking; hence the name "Manoosha", chosen to enumerate one of the first Levantine traditional meals.

Today, "Manoosha" has established itself as a market leader in the Manaeesh business with its commitment to delicious food and superior service. We have 20 operating outlets across the Kingdom and 8 bakeries are under construction and will be ready to open by end of Q3 of 2022.

www.safari.com.sa



OVER THE LAST
20 YEARS
WE HAVE SERVED OVER



**80 million
Manoosha**



OUR INGREDIENTS

OUR VEGETABLES

No Canned or frozen vegetables of any kind at our premises. This is not a promise this is a fact. Fresh and fresh only is what we serve from the bright tomatoes used for our sauces to the green shiny spinach leaves for our special Manoosha spinach mix, all are delivered fresh daily to our stores, nothing but pure freshness.

OUR CHEESE

It's called Cheese for a smile in English, Fromage in French, Formaggio in Italian, and of course Jubnah in Arabic. Akkawi, Kashkavan, Halloumi, Mozzarella, Cheddar, Emmental, and Parmesan... Yes we use all these high quality cheese in our Manaeesj. Just Pure smiles, Akkawi from the Czech Republic - Kashkavan from Hungary - Halloumi from Cyprus - Cheddar from the United Kingdom - Parmesan from Italy - Emmental from France - Mozzarella from United States.

OUR DOUGH

Manoosha dough is where it all started. In some ways. It summarize what Manoosha is all about. It's light, lean, high in protein, with a texture full of life, energy, and youth. It is the jewel of the crown as they say.

*Made fresh daily in all our restaurants.



OUR ZAATAR

It's called Cheese for a smile in English, Fromage in French, Formaggio in Italian, and of course Jubnah in Arabic. Akkawi, Kashkavan, Halloumi, Mozzarella, Cheddar, Emmental, and Parmesan... Yes we use all these high quality cheese in our Manaeesj. Just Pure smiles, Akkawi from the Czech Republic - Kashkavan from Hungary - Halloumi from Cyprus - Cheddar from the United Kingdom - Parmesan from Italy - Emmental from France - Mozzarella from United States.

OUR MEAT

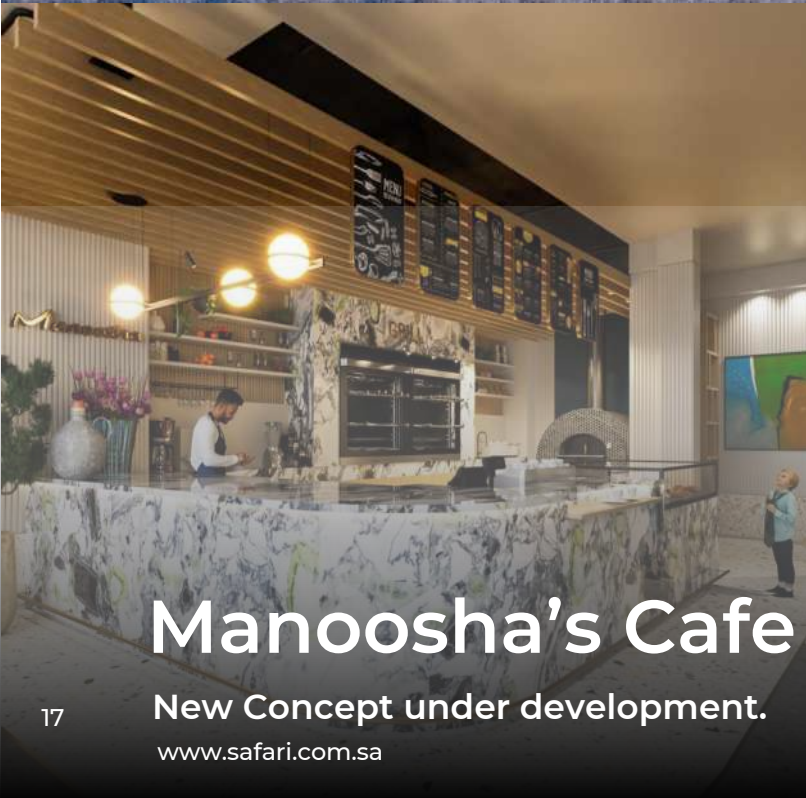
It's called Cheese for a smile in English, Fromage in French, Formaggio in Italian, and of course Jubnah in Arabic. Akkawi, Kashkavan, Halloumi, Mozzarella, Cheddar, Emmental, and Parmesan... Yes we use all these high quality cheese in our Manaeesj. Just Pure smiles, Akkawi from the Czech Republic - Kashkavan from Hungary - Halloumi from Cyprus - Cheddar from the United Kingdom - Parmesan from Italy - Emmental from France - Mozzarella from United States.

Manoosha KSA Interiors and Exteriors

Quick Service Branch

www.safari.com.sa





Manoosha's Cafe Interiors and Exteriors

New Concept under development.

www.safari.com.sa

Koffeehaus Limited

Safari has, in its persistent Investment Expansion Policy, established the “Koffeehaus Limited” Company in the United Kingdom in the middle of 2015 aiming to invest in distinctive, high quality coffee shops. As such, “Koffeehaus” obtained the commercial brand Franchise “Second Cup”; the international, famous and prominent name in the world of Coffee.

Immediately “Koffeehaus” has opened its first branch of “Second Cup” chain in July 2015 in the City of London, Portobello (216 Portobello Road, London W11 1LJ). Subsequently the second branch was opened in Bloomsbury (Victoria House, Southampton Row, London WC1B 4DA). The ongoing expansion plan, to open other branches, is persistent.

“Koffeehaus” is committed, through its chain of branches to offer high quality products, unique services, in enjoyable and convenient ambiances. All of our customers, with no doubt, deserve to enjoy this commitment.

www.safari.com.sa



Current & Development Plan

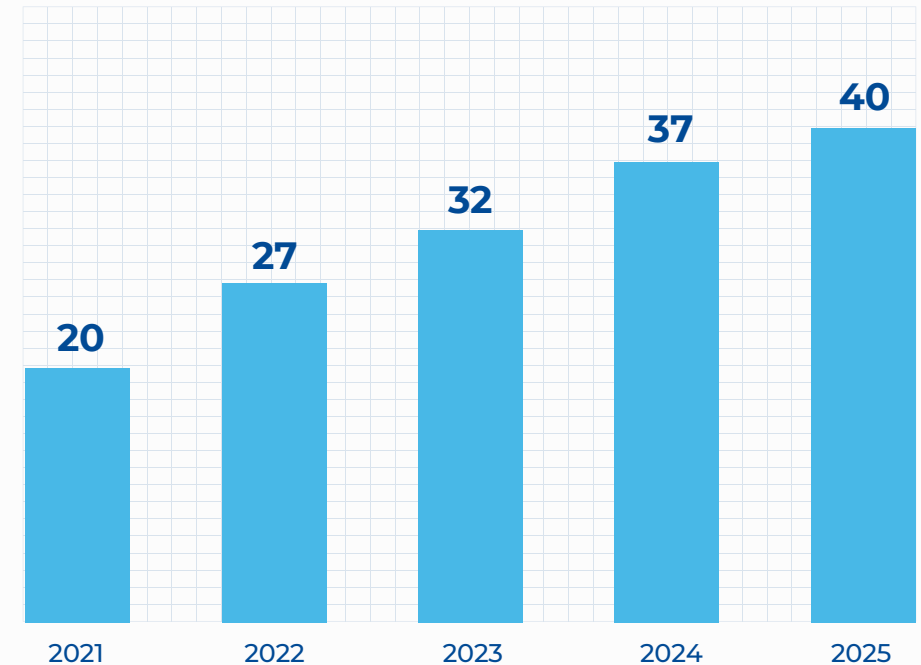
Existing Plans

Sulimaniah	Riyadh
Mannar	Riyadh
Nakheel	Riyadh
Badiya	Riyadh
Aqeeq	Riyadh
Rawabi	Riyadh
Qurtoba	Riyadh
Buraidah	
Nahda	Riyadh
Oneza	
Hail	
Makkah rd.	Riyadh
Military	Riyadh
Al Hamra	Jeddah
P. Sultan	Jeddah
Alfalah	Riyadh
Laban	Riyadh
Sweidy	Riyadh
Maseef	Riyadh
Obhur	Jeddah

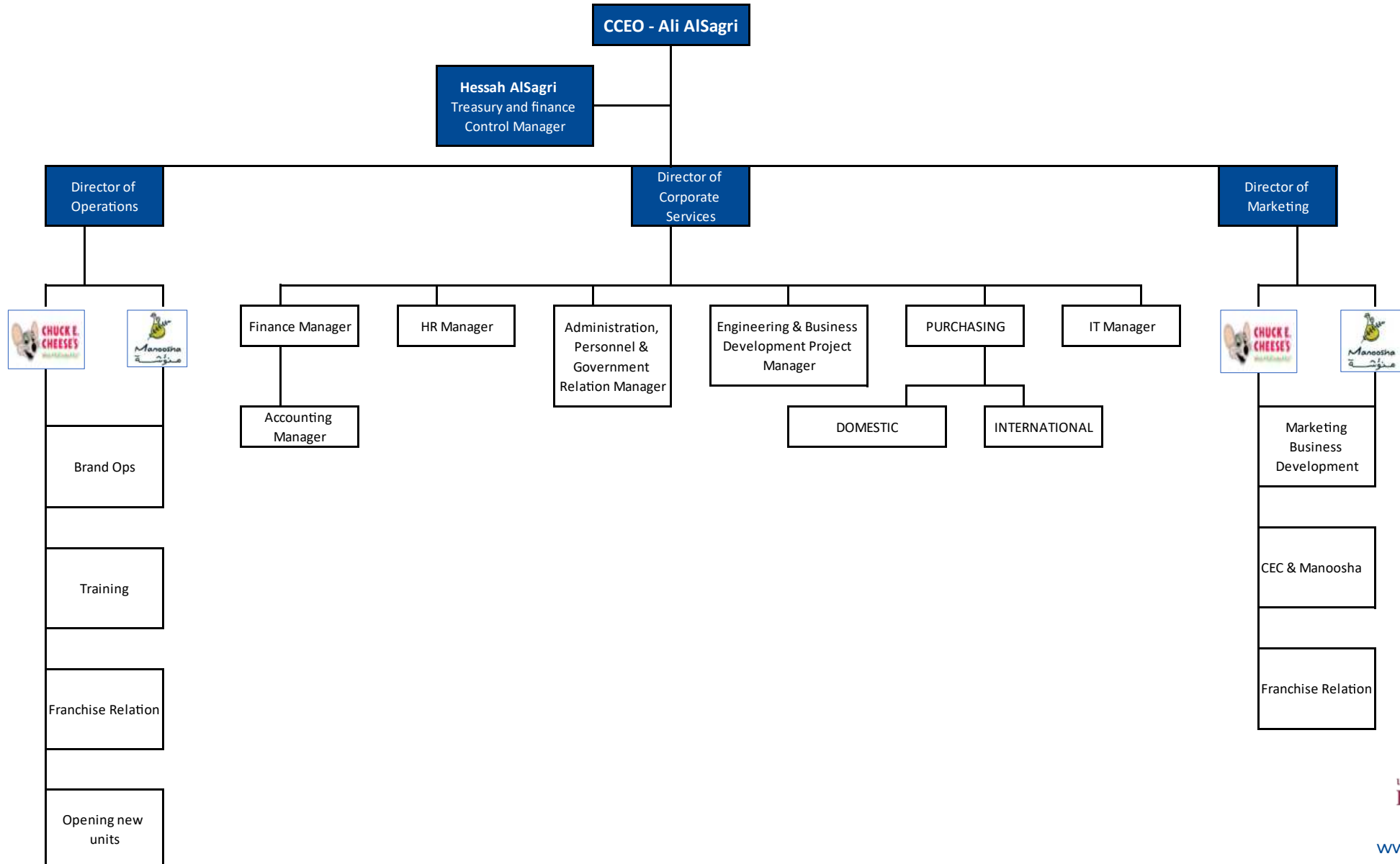
Opening Plans

Azizah Riyadh	March 22
Granda Plaza Riyadh	April 22
Safa Jeddah	April 22
Shawqia Makkah	May 22
Khalidiya Madina	May 22
Khobar Kitchen Park	July 22
Dammam Kitchen Park	August 22
Riyadh Olaya	January 23
Jeddah East	February 23
Makkah Azizah	May 23
Madinah Sultan	June 23
Makkah 2	July 23
Riyadh Monesiah	January 24
Riyadh Naseem	February 24
Riyadh Swaidy	May 24
Jeddah Makkah Rd	July 24
Tabuk	September 24
Riyadh Thumama	May 25
Jeddah Madinah Rd	September 25
Riyadh Malaz	November 25

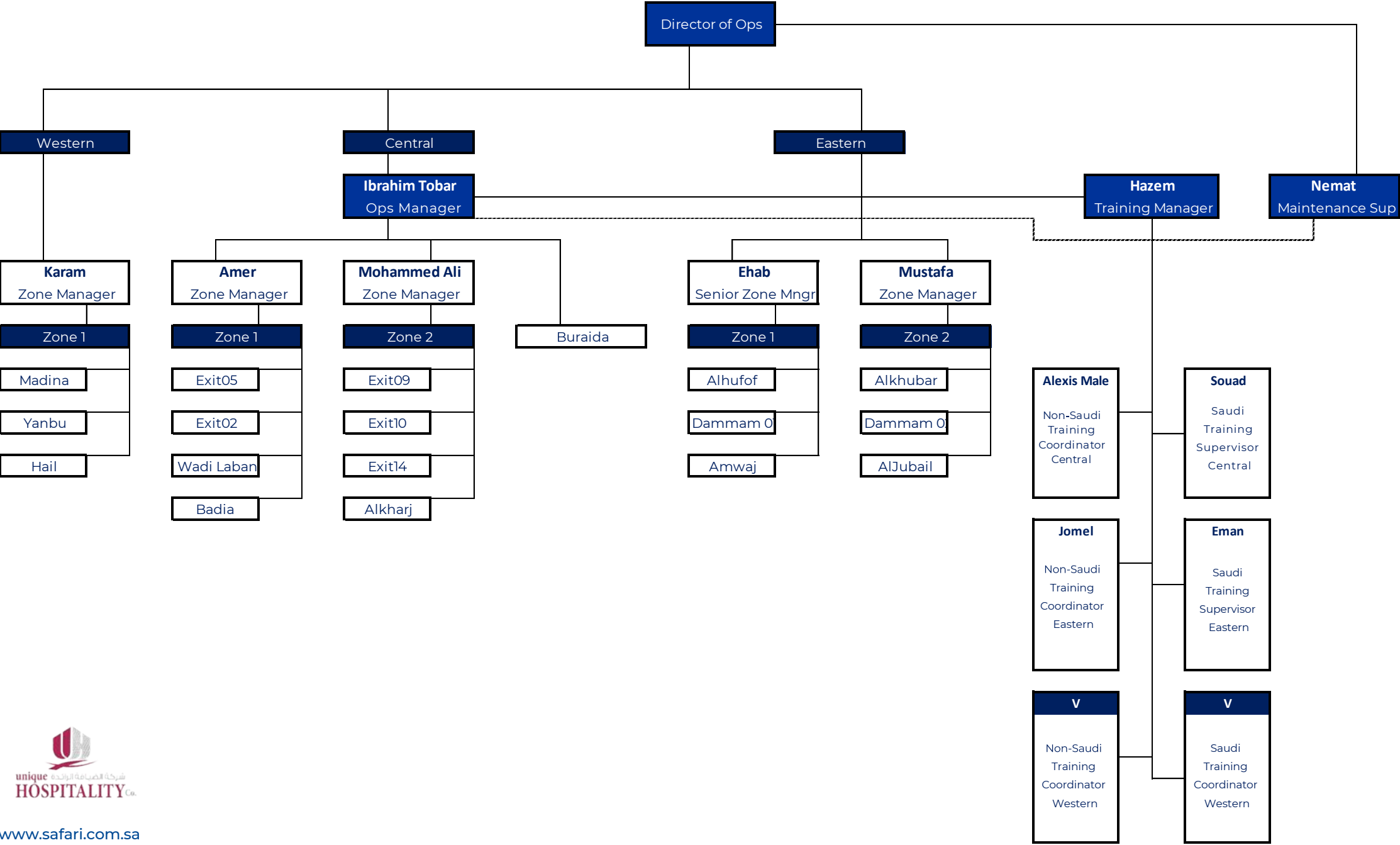
Number of units by year.



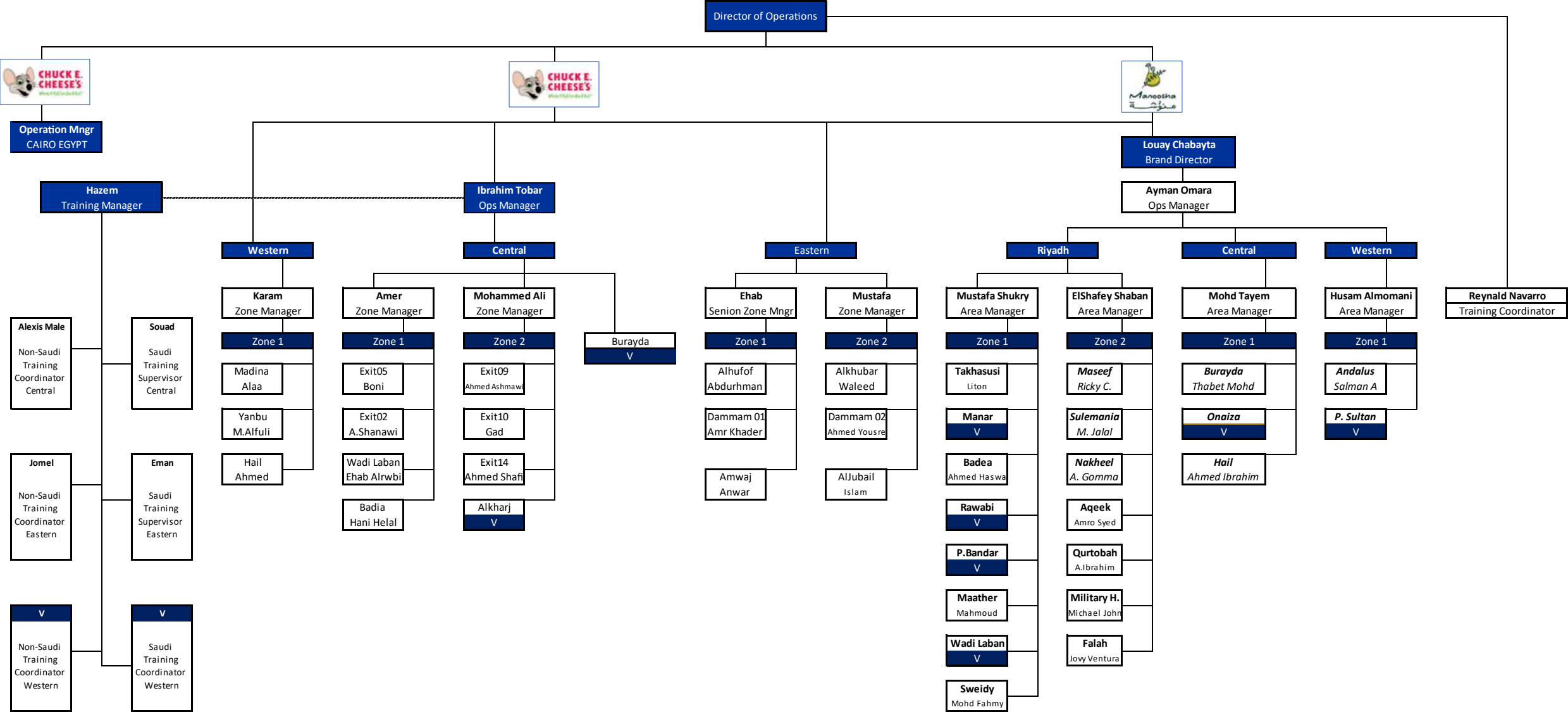
UHC DEPARTMENT HEAD



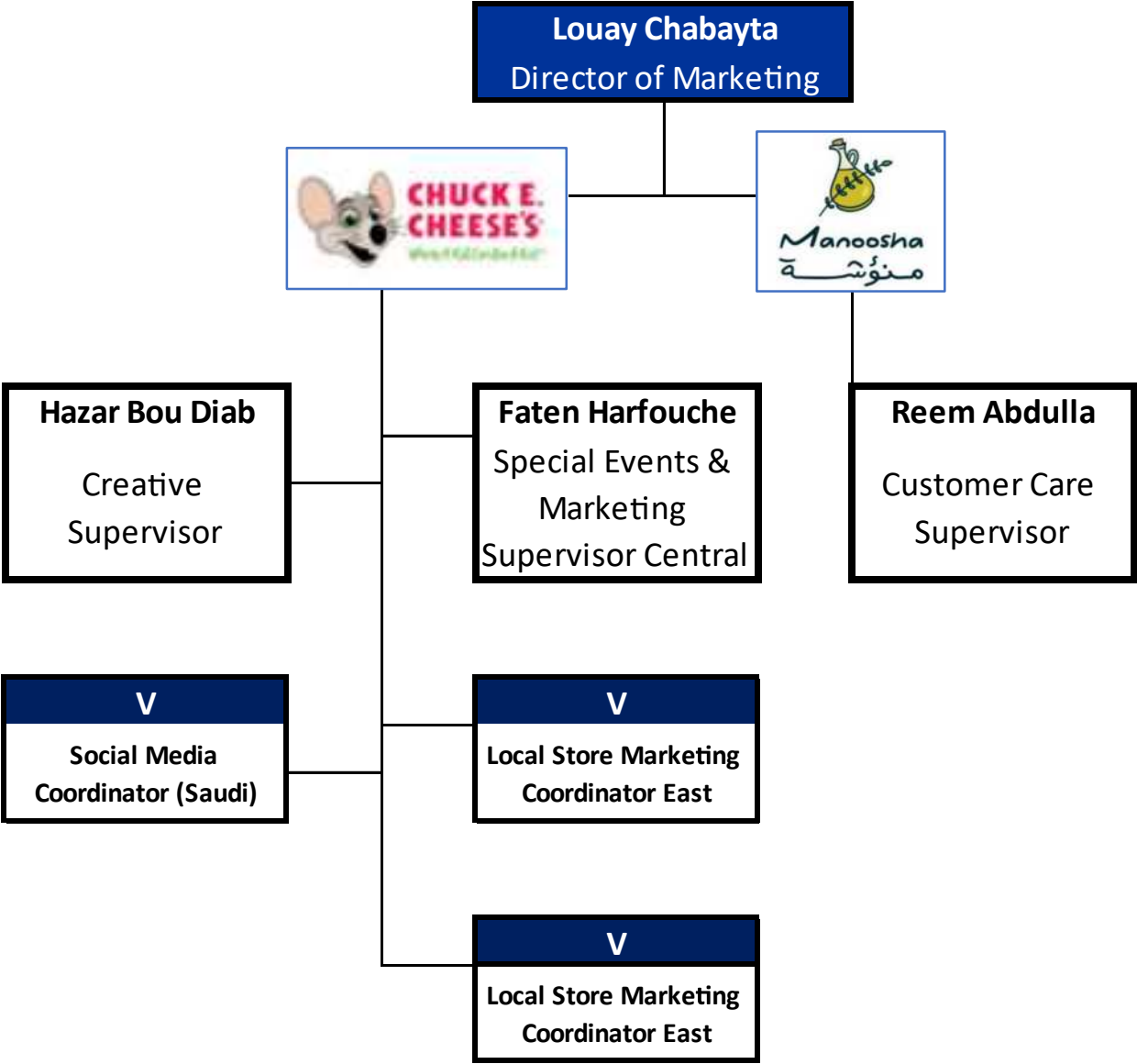
Operations Zone Plan for CEC



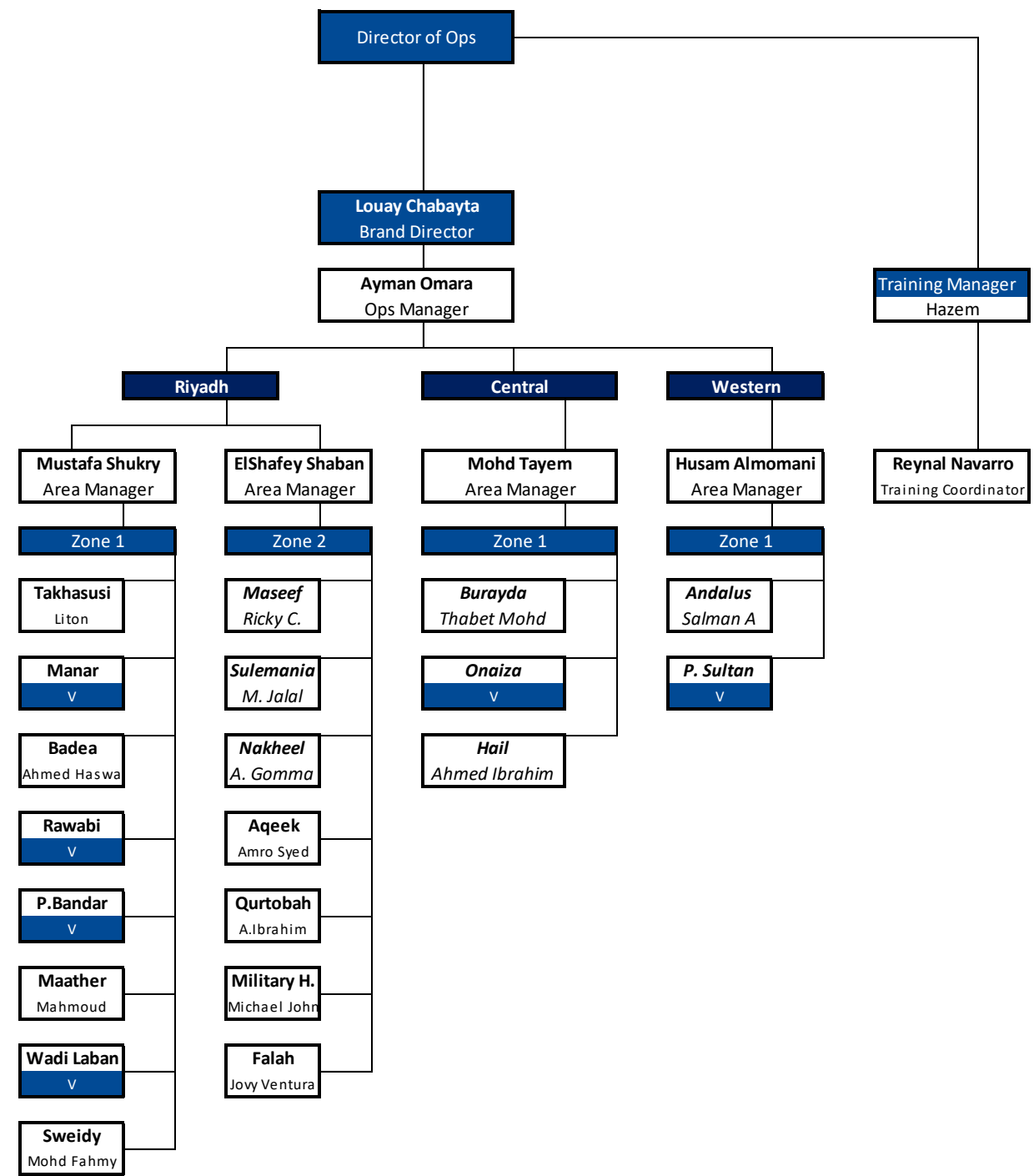
UHC OPERATIONS STRUCTURE



UHC MARKETING TEAM



MANOOSHA OPERATIONS STRUCTURE



Thank you